

Ziel : basis wlan router EasyBox 904 und Asus WLAN Router WL-500g als repeater (nicht accesspoint).

basis router easybox 904	Repeater : Asus WLAN Router WL-500g
ip 192.168.2.1 net mask 255.255.255.0 gateway 192.168.2.1 mac adr :(LAN) D0:05:2A:2D:1E:90 mac adr :(wLAN) D0:05:2A:2D:1E:96 mac adr :(wLAN) D0:05:2A:2D:1E:98	ip 192.168.2.10 net mask 255.255.255.0 gateway 192.168.2.1 Mac Adr : 00:0e:a6:90:7d:84
SSID : EasyBox-2D1E04-LR channel 1 AES Netzwerkschlüssel : r12a23j45	SSID : EasyBox-2D1E04-LRrpt channel 1 AES Netzwerkschlüssel einstellung nicht gefunden
wds funktion : ein versuch wpa, wpa2, wpa+wpa2 WPS : ausgeschaltet	wds only versucht : wpa, wpa+psk WPS einstellung gibt es nicht.
eingetragen : ssid repeater : EasyBox-2D1E04-LRrpt Mac Adr repeater : 00:0e:a6:90:7d:84	eingetragen : ssid basis router EasyBox-2D1E04-LR Mac Adressen basis router : mac adr :(LAN) D0:05:2A:2D:1E:90 mac adr :(wLAN) D0:05:2A:2D:1E:96 mac adr :(wLAN) D0:05:2A:2D:1E:98
diese und weitere Einstellungen : siehe folgende Screen Shots.	

Abbild 1 : folgendes screen shot zeigt notebook 192----132, pc 192----190, lan printserver 192---125, asus WLAN Router WL-500g 192---10 (mit RJ45 Lan kabel verbunden)

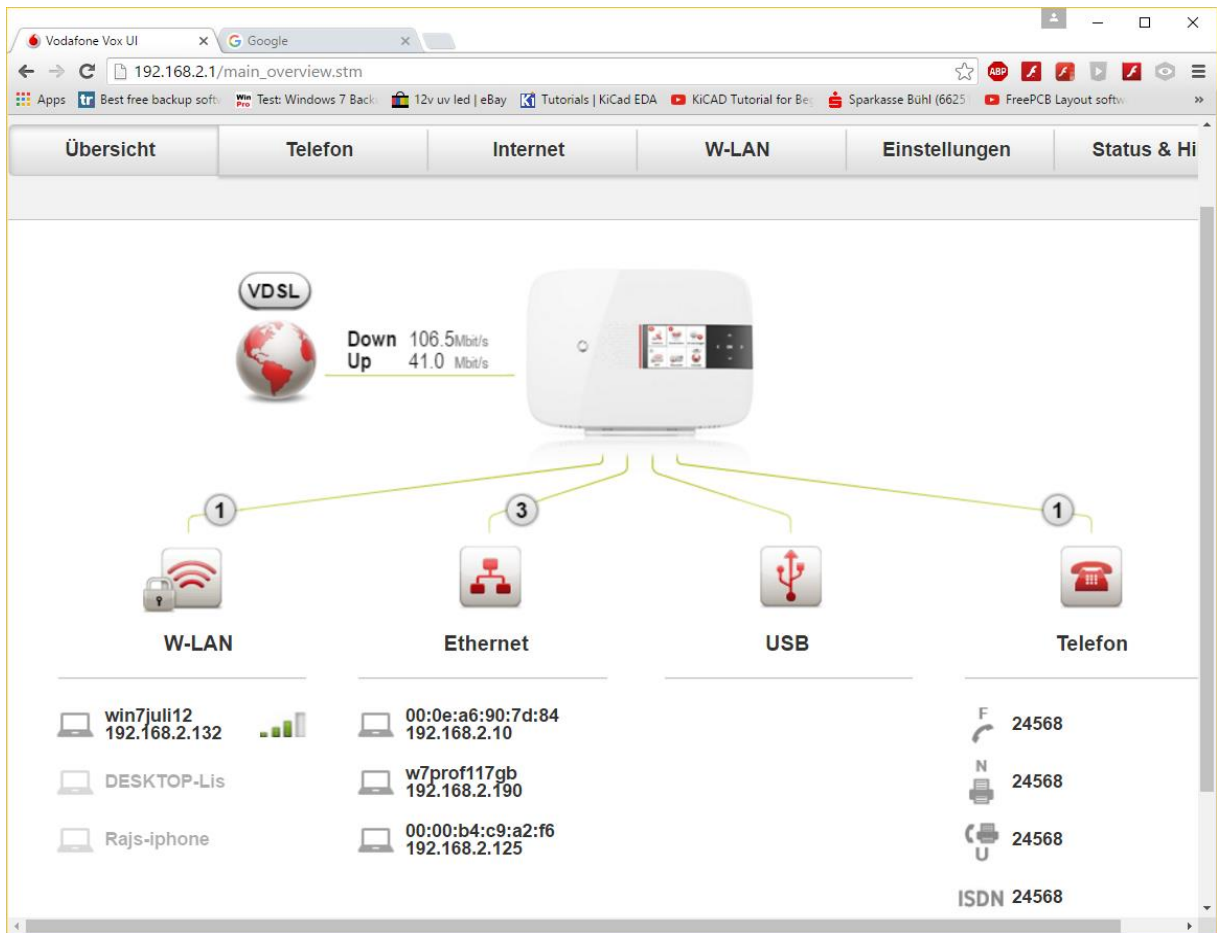


Abbildung 2 : Folgendes screen shot zeigt WLAN Einstellungen

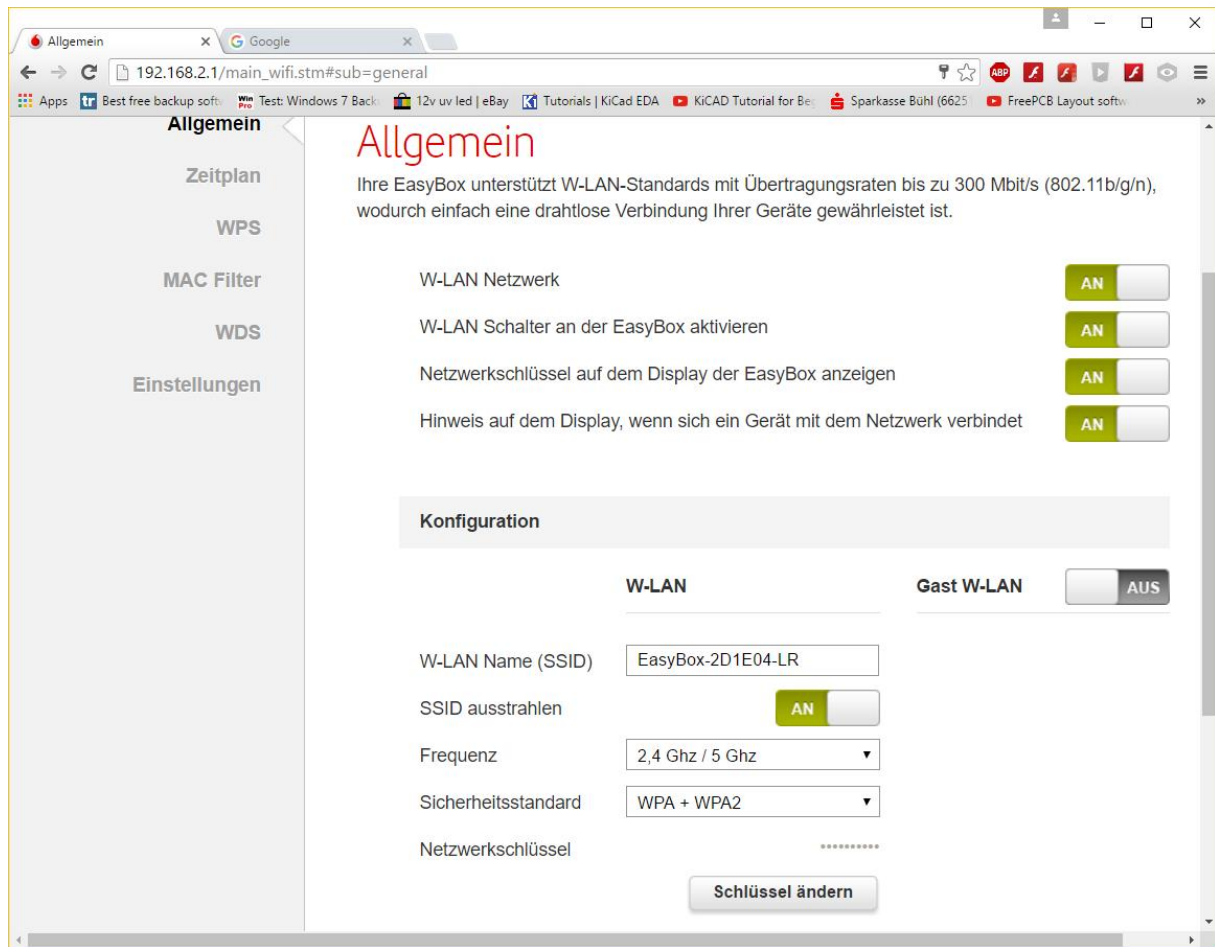
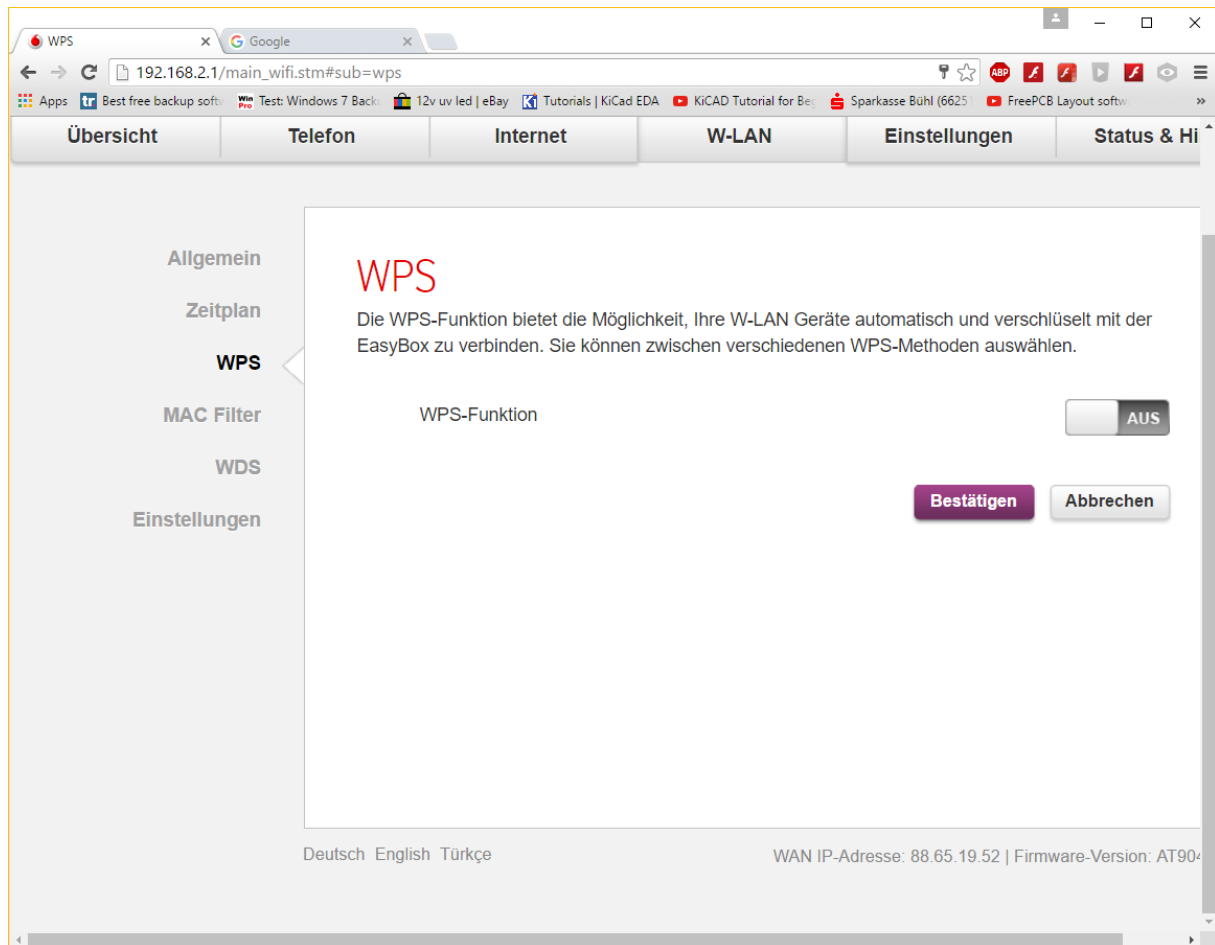
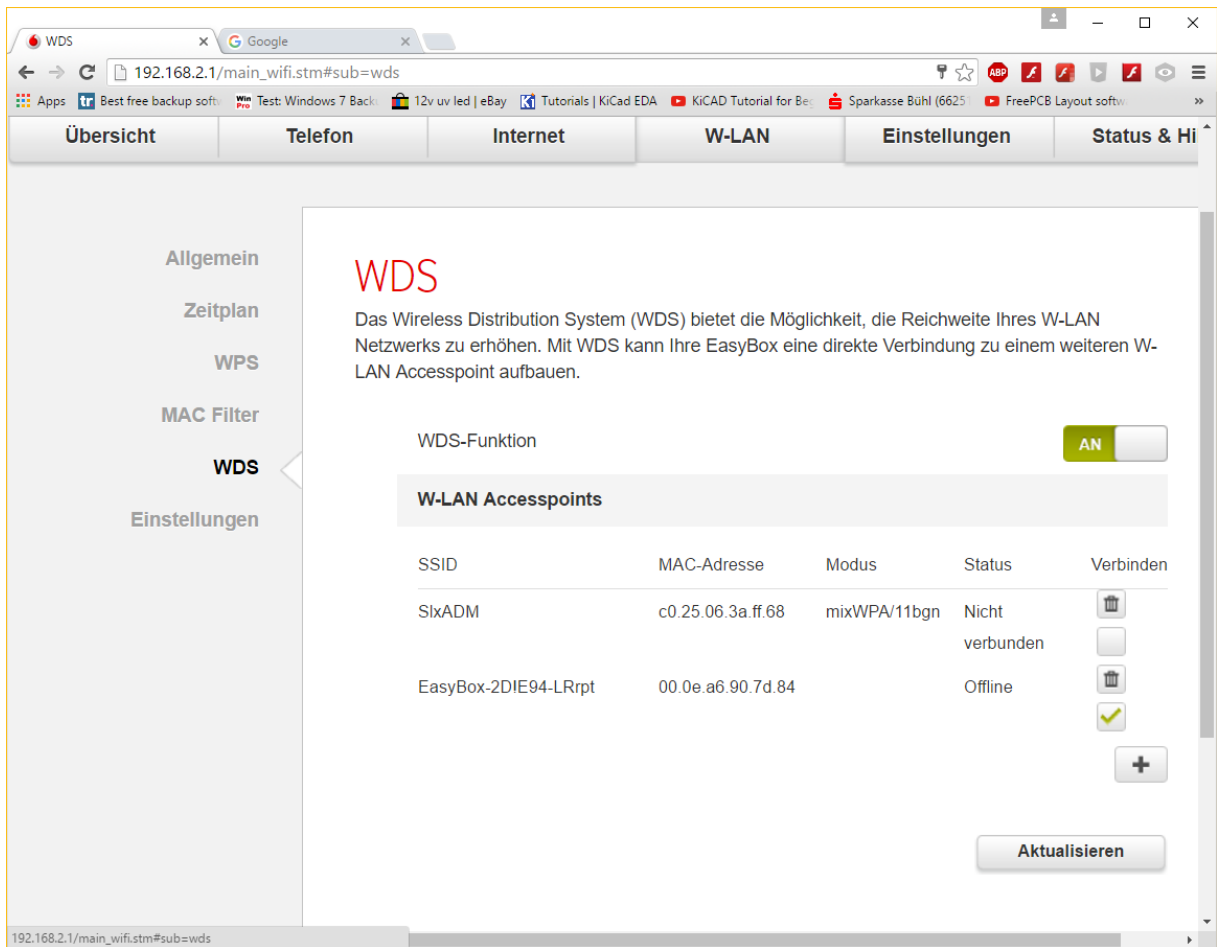


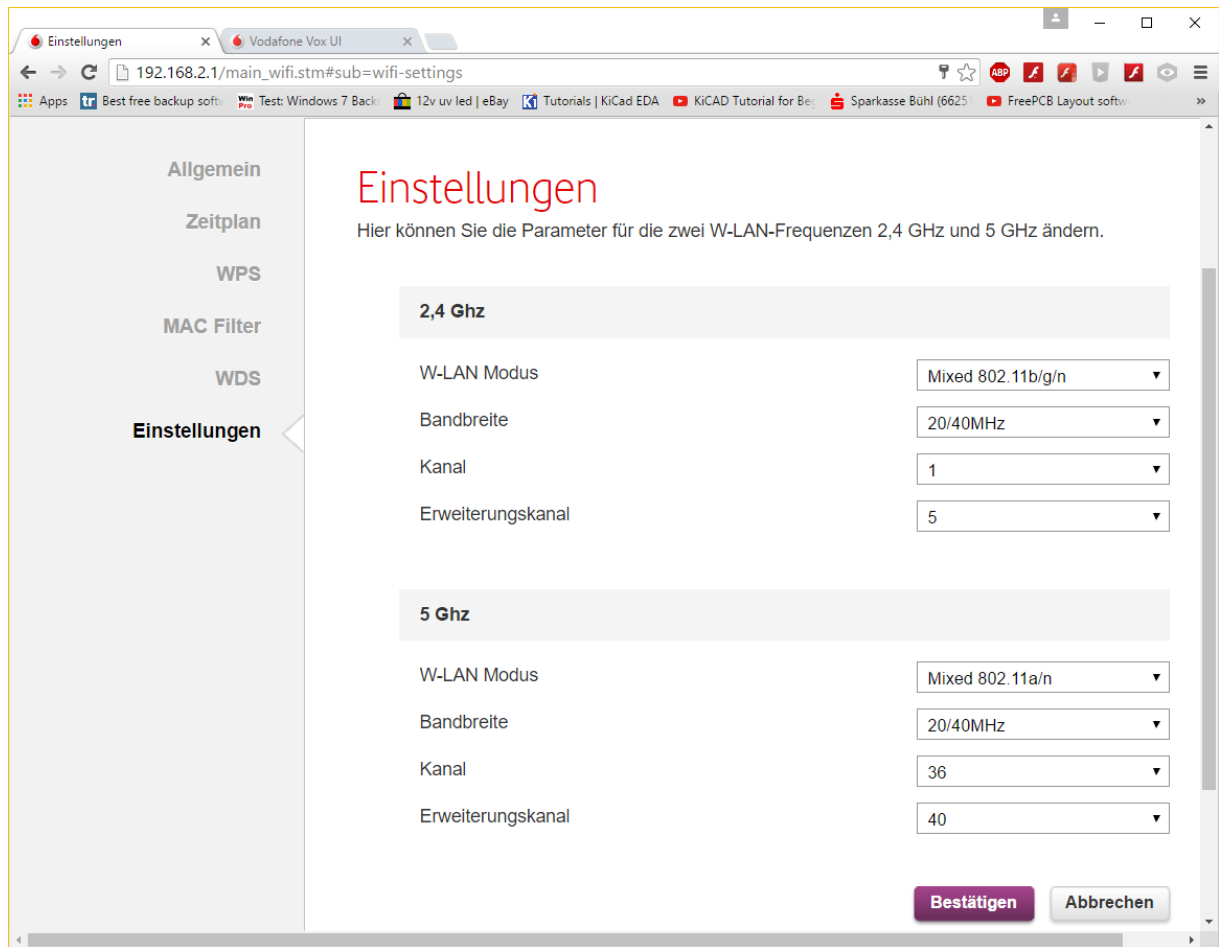
Abbildung 3 : folgendes screen shot zeigt, dass die WPS Funktion ausgeschaltet ist



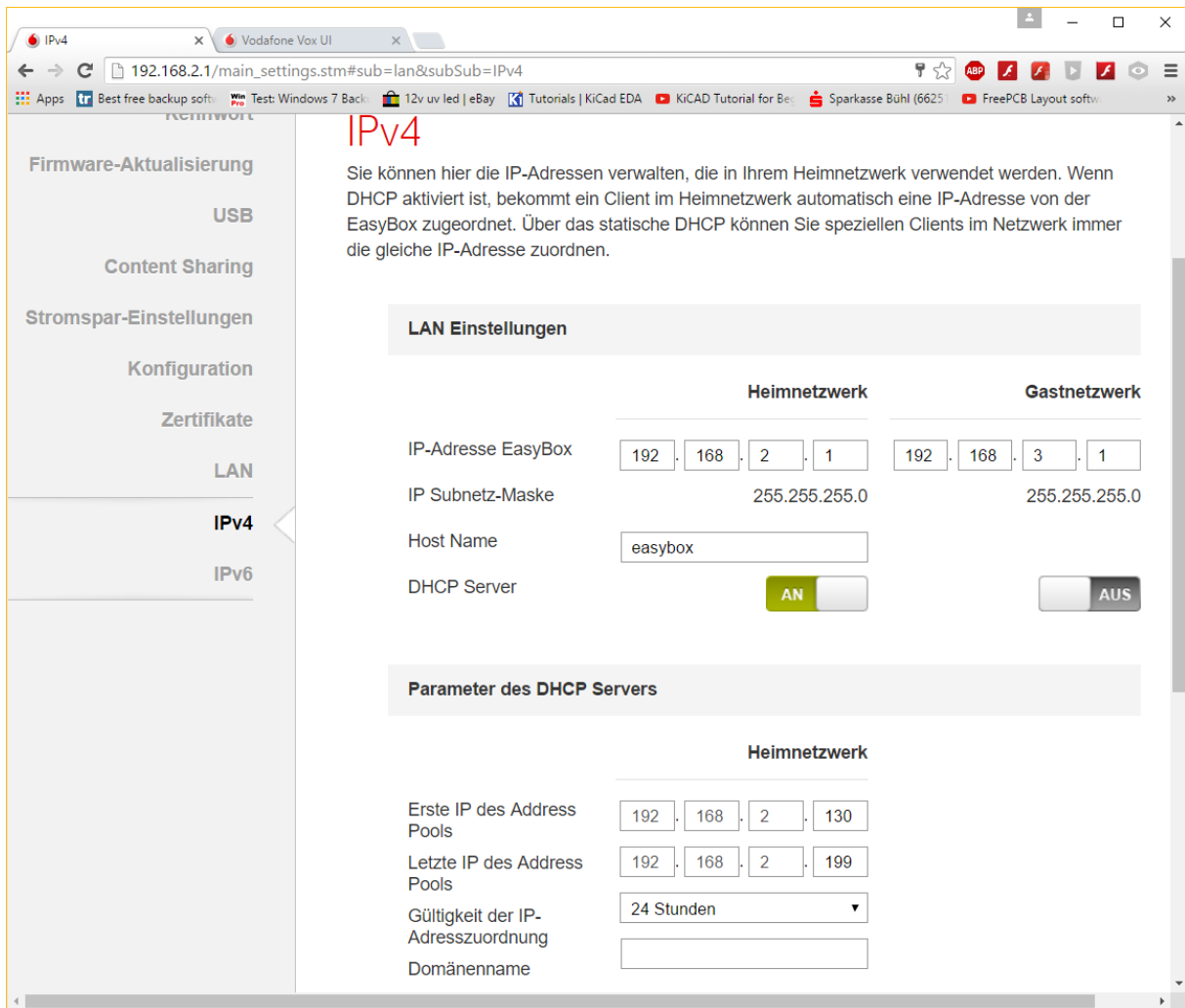
Abbild 4 : folgendes screen shot zeigt, dass die WDS Funktion eingeschaltet ist und ssid von Asus WL-500g --- mac Adresse eingetragen ist --- zeigt status OFFLINE (das ist Rätzelhaft) Gerät ist eingeschaltet (vielleicht irgend eine Einstellung stimmt nicht -- siehe weiter unter Einstellungen von WL-500g)



Abbild 5 : folgendes screen shot zeigt WLAN Einstellungen



Abbild 6 : folgendes screen shot zeigt LAN und DHCP Einstellungen.



Abbild 7 und 8 : folgende 2 screen shot zusammen zeigen status von EasyBox 904

Browser window showing the status page of a Vodafone EasyBox. The address bar displays `192.168.2.1/main_status-and-support.stm#sub=status`. The page title is "Status".

The left sidebar contains the following navigation items:

- Status
- DSL Status
- Telefonie Status
- Vodafone TV Status
- NAT Verknüpfungstabelle
- Diagnose-Tool
- Ereignis-Logbuch
- Neustart
- Über

The main content area displays the "Status" page with the following text:

Sehen Sie hier einen Überblick über alle Parameter der EasyBox. Dies kann auch helfen, Ihre EasyBox zu optimieren, oder eventuelle Probleme zu erkennen.

The page is divided into three sections:

Internet

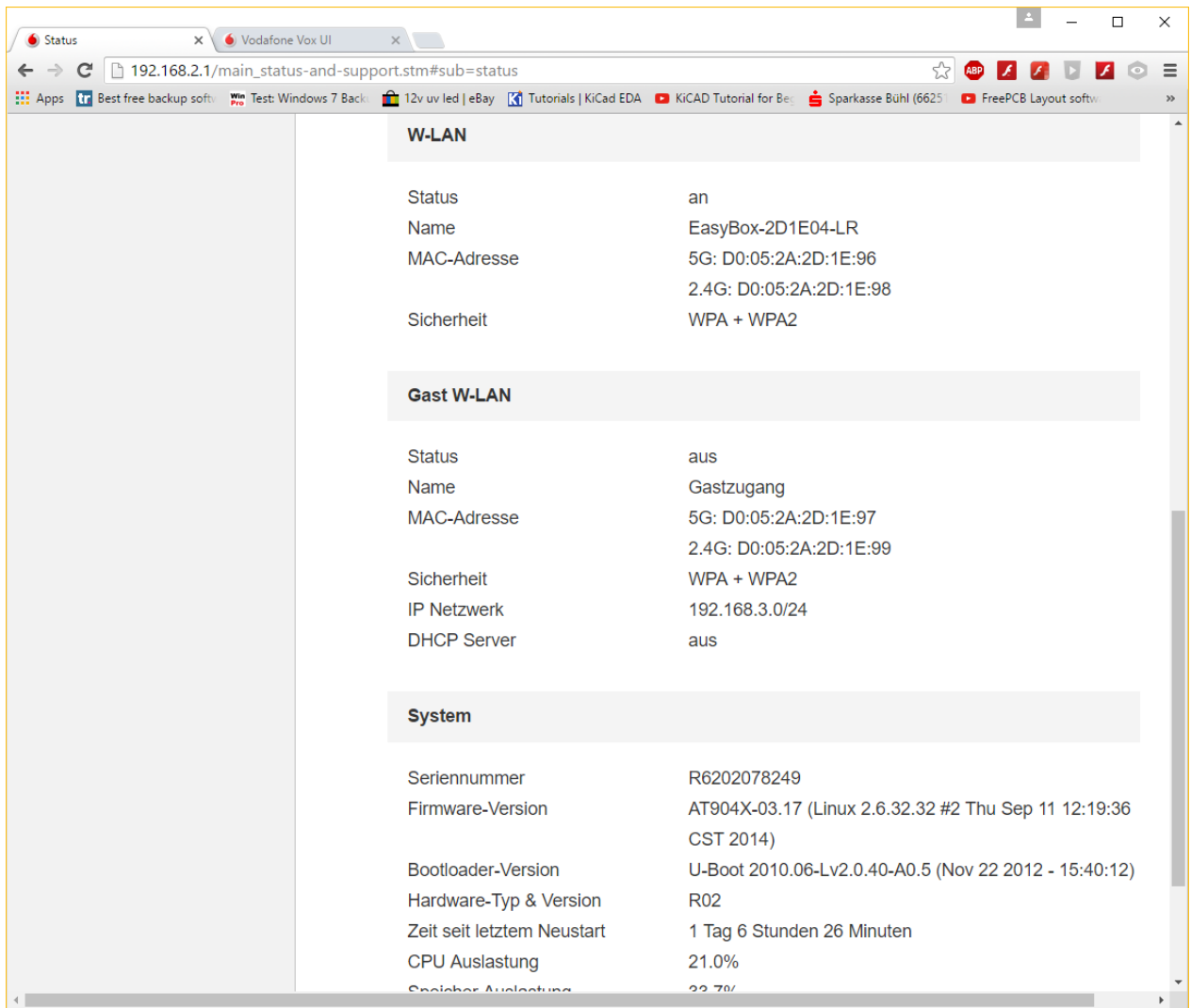
IP-Adresse	88.65.19.52
Gateway	88.65.16.1
Primärer DNS	176.95.16.245
Sekundärer DNS	176.95.16.251
Firewall	an

LAN

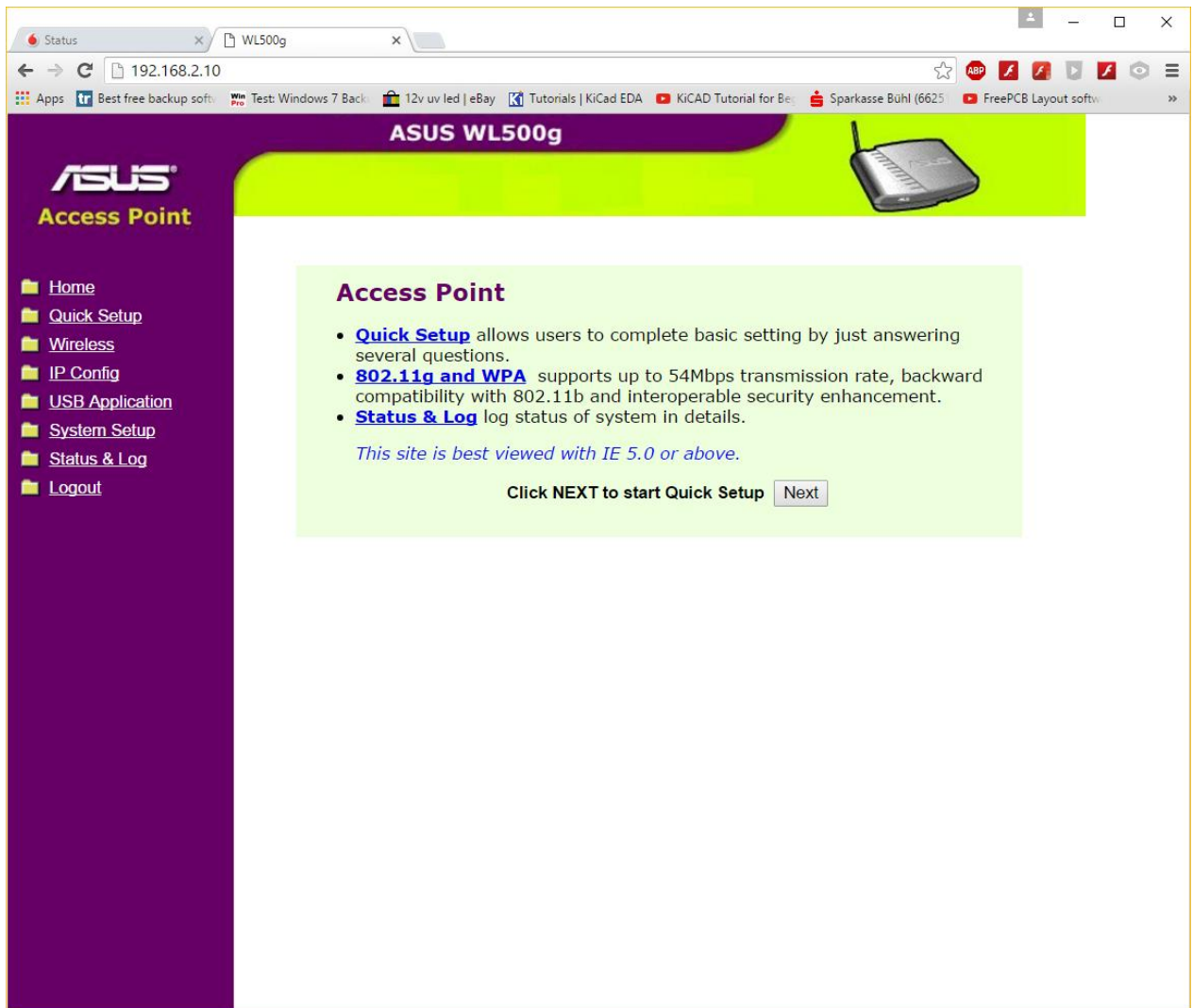
IP Netzwerk	192.168.2.0/24
Gateway	192.168.2.1
MAC-Adresse	D0:05:2A:2D:1E:90
DHCP Server	an

W-LAN

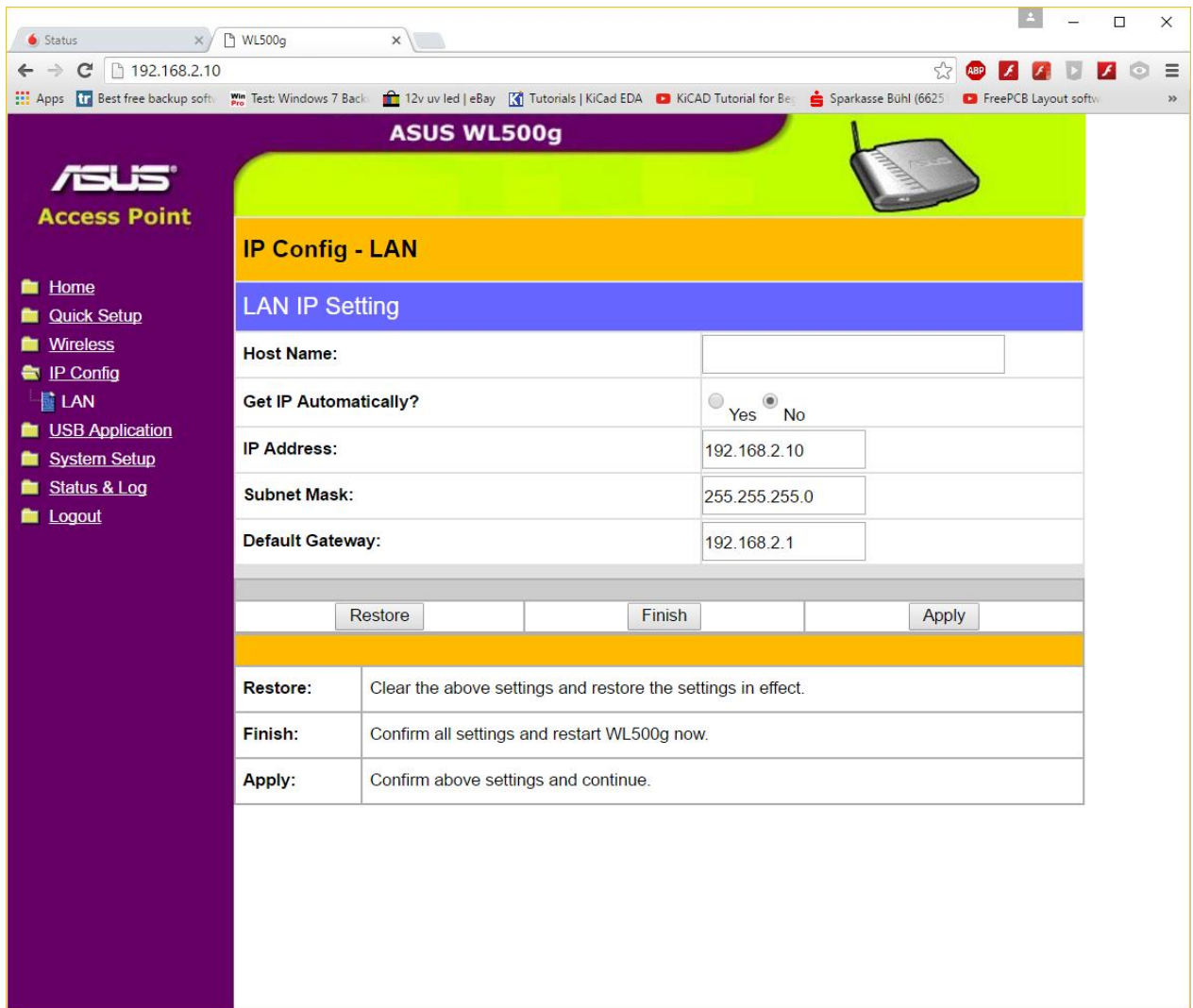
Status	an
Name	EasyBox-2D1E04-LR
MAC-Adresse	5G: D0:05:2A:2D:1E:96 2.G: D0:05:2A:2D:1E:98



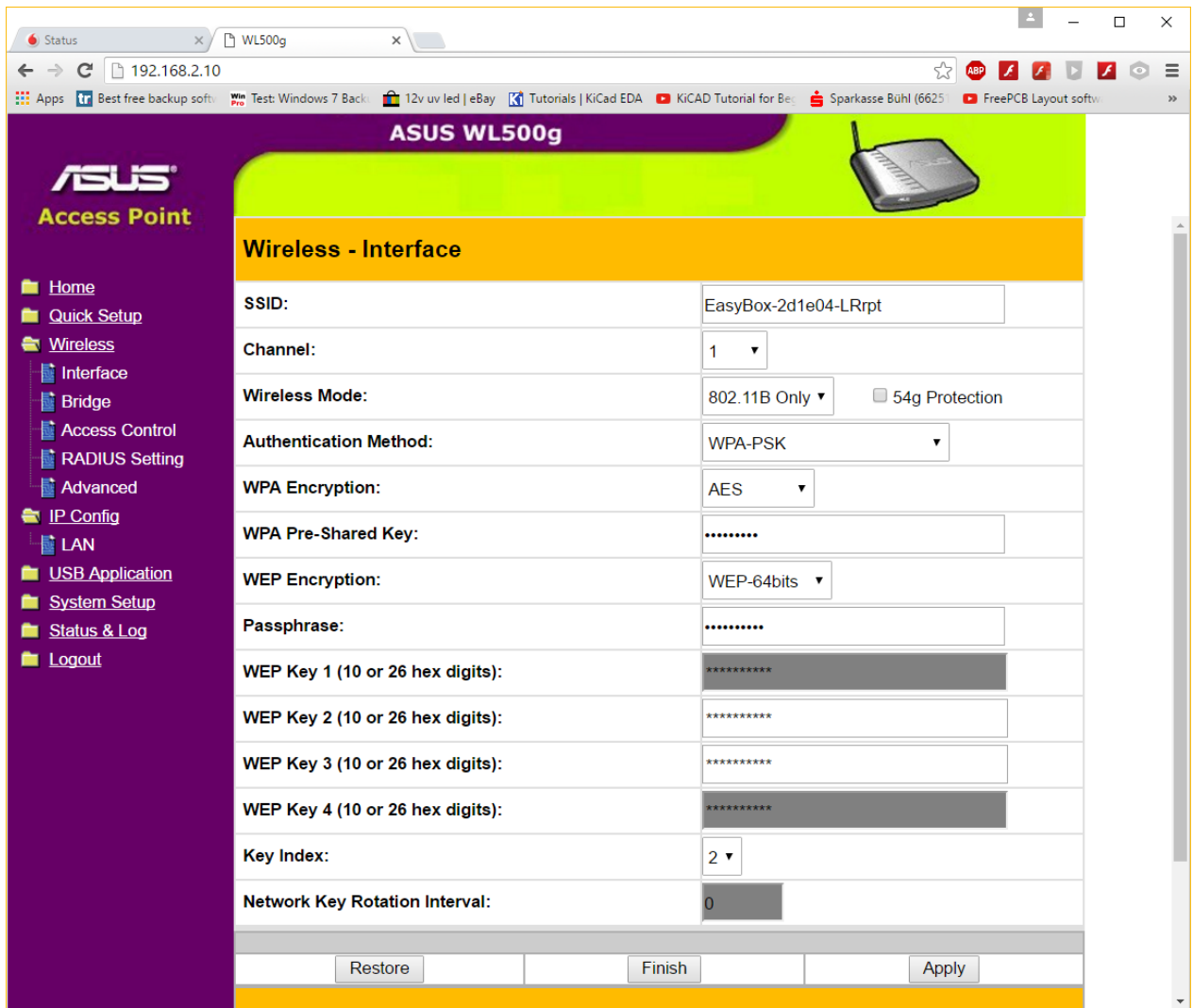
Abbild 9 : Nun screen shots von Asus WLAN Router WL500g (als repeater sein soll)



Abbild 10 : folgendes screen shot zeigt LAN IP Einstellungen



Abbild 11 : folgendes screen shot zeigt WLAN Einstellungen : SSID, Channel, Wireless mode Authentication : WPA-PSK (auch andere WPA versucht) WPA Encryption : AES , usw



Abbild 12 : folgendes screen shot zeigt Bridge oder WDS einstellungen : WDS Only (nicht ACCESSpoint) channel, connection to APs in remote list, remote list mit Mac Adressen von Easy Box (siehe oben status von EasyBox).

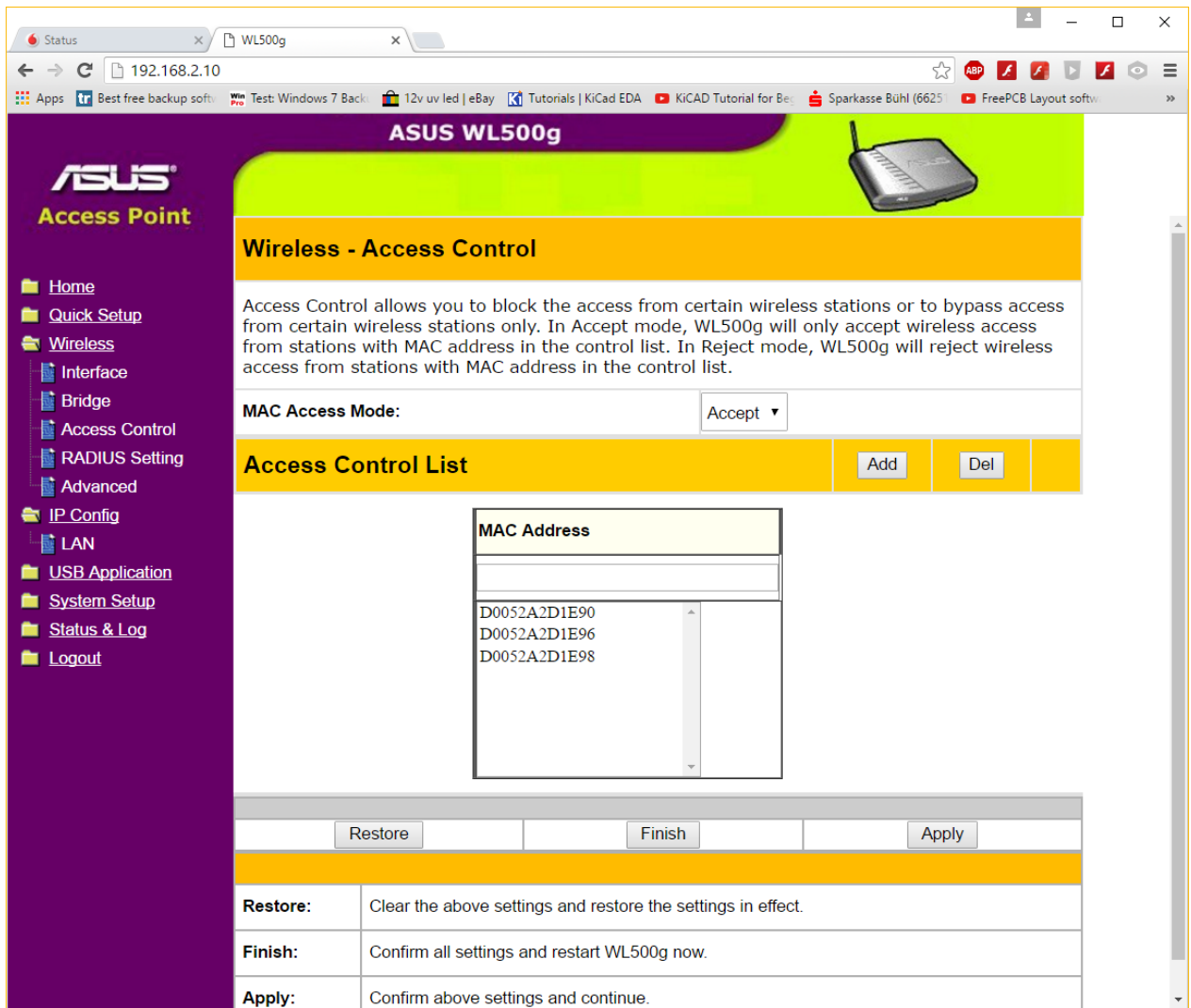
The screenshot shows the ASUS WL500g web interface. The browser address bar displays '192.168.2.10'. The page title is 'ASUS WL500g'. The main heading is 'Wireless - Bridge'. Below the heading, there is a description: 'Wireless bridge (also known as Wireless Distribution System or WDS) function allows you to connect to one or many APs through wireless.' A diagram illustrates three wireless access points connected to a central network, with the text 'WDS Only' below it. The configuration section includes the following options:

- AP Mode: WDS Only (dropdown menu)
- Channel: 1 (dropdown menu)
- Connect to APs in Remote Bridge List? (radio buttons for Yes and No, with No selected)
- Allow anonymous? (radio buttons for Yes and No, with No selected)

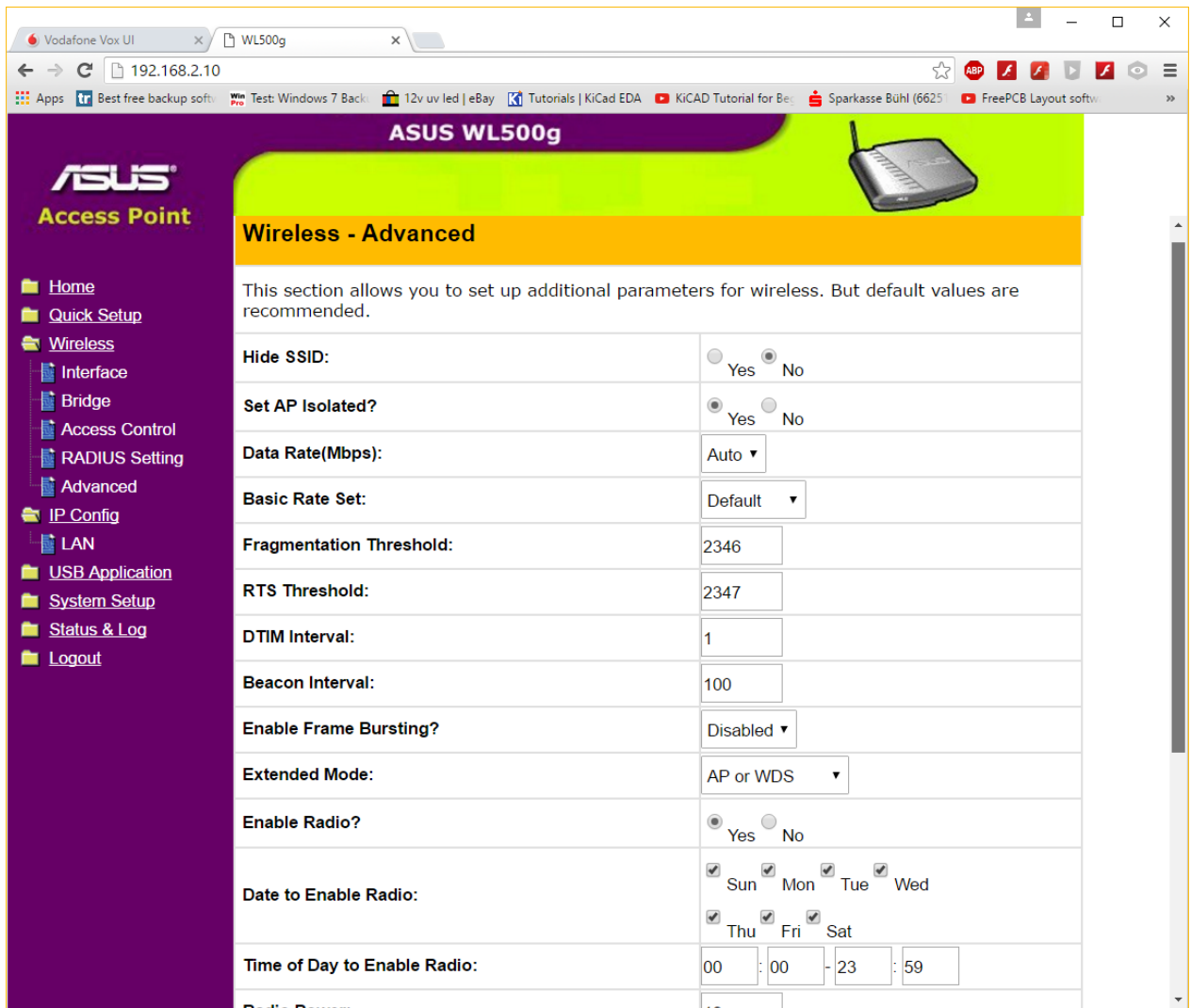
Below the configuration options is a 'Remote Bridge List' section with 'Add' and 'Del' buttons. A table lists MAC addresses:

MAC Address
D0052A2D1E90
D0052A2D1E96
D0052A2D1E98

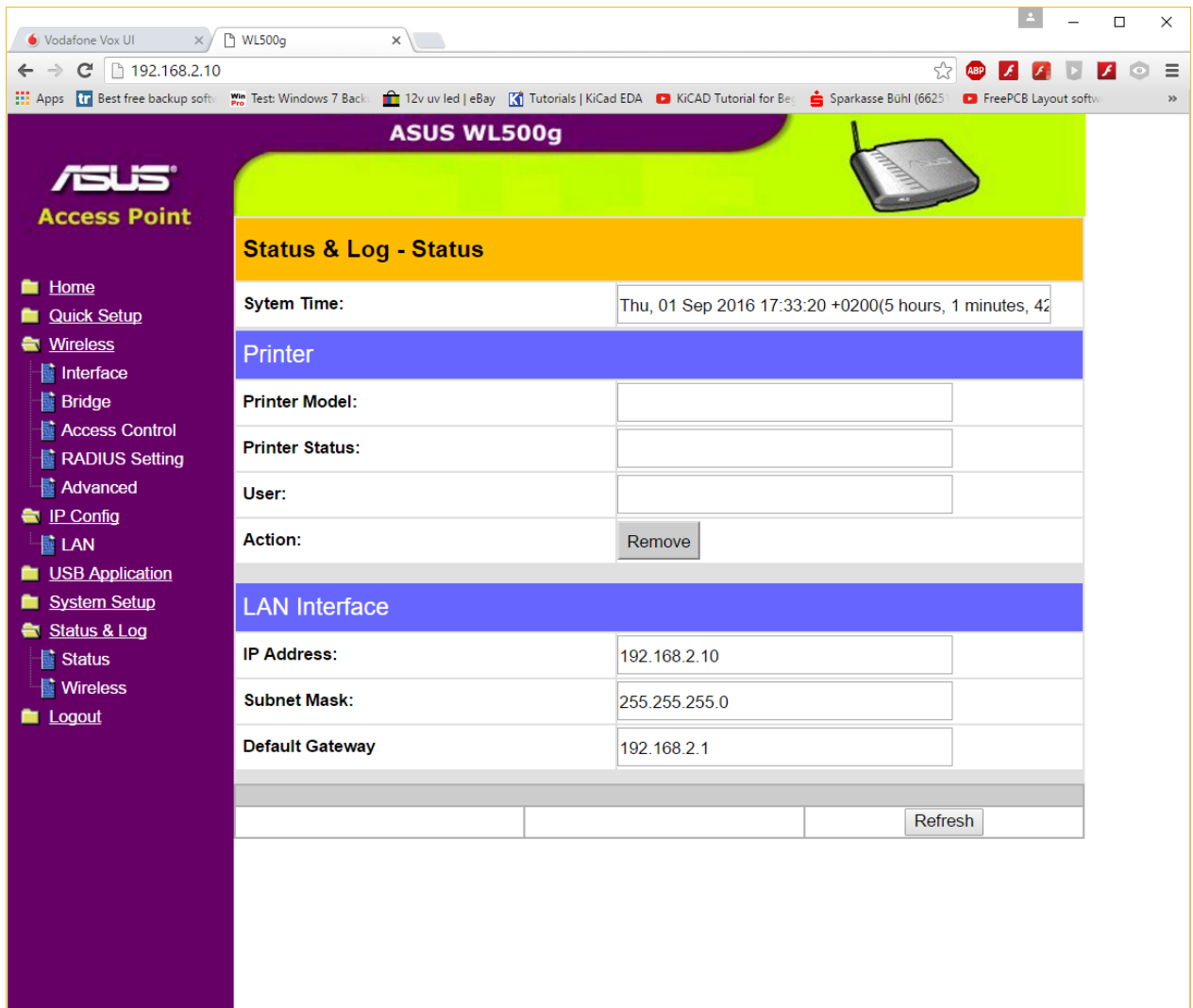
Abbild 13 : folgendes screen shot zeigt access control -- mit Mac Adressen von Easy Box (siehe oben status von EasyBox).



Abbild 14 : folgendes screen shot zeigt advance wireless einstellungen




Abbild 15 : folgendes screen shot zeigt status von asus wl-500g



Abbild 16 : folgendes screen shot zeigt wl-500g system setup

Vodafone Vox UI | WL500g | easybox 803 | eBay | 192.168.2.10

ASUS WL500g



ASUS
Access Point

- Home
- Quick Setup
- Wireless
 - Interface
 - Bridge
 - Access Control
 - RADIUS Setting
 - Advanced
- IP Config
 - LAN
- USB Application
- System Setup
 - Operation Mode
 - Change Name
 - Change Password
 - Firmware Upgrade
 - Setting Mangement
 - Factory Default
- Status & Log
 - Status
 - Wireless
- Logout

System Setup - Operation Mode

WL500g supports three operation modes to meet different requirements from different group of people. Please select the mode that match your situation.

<input type="radio"/> Home Gateway	<p>In this mode, we suppose you use WL500g to connect to Internet through ADSL or Cable Modem. And, there are many people in your environment share the same IP to ISP.</p> <p>Explaining with technical terms, gateway mode is , NAT is enabled, WAN connection is allowed by using PPPoE, or DHCP client, or static IP. In addition, some features which are useful for home user, such as UPnP and DDNS, are supported.</p>
<input type="radio"/> Router	<p>In Router mode, we suppose you use WL500g to connect to LAN in your company. So, you can set up routing protocol to meet your requirement in office.</p> <p>Explaining with technical terms, router mode is, NAT is disabled, static routing protocol are allowed to set.</p>
<input checked="" type="radio"/> Access Point	<p>In Access Point mode, all 5 Ethernet ports and wireless devices are set to locate in the same local area network. Those WAN related functions are not supported here.</p> <p>Explaining with technical terms, access point mode is, NAT is disabled, one wan port and four lan ports of WL500g are bridged together.</p>